



Rising with the sun...

STAINLESS STEEL TANKS
SOLAR WATER HEATERS
HEAT PUMPS
WATER MANAGEMENT SOLUTIONS



www.sunstellar.in



STAINLESS STEEL WATER TANKS SOLAR WATER HEATERS HEAT PUMPS

ABOUT US

We at Sun Stellar Pride ourselves in delivering innovative, high performing and competitive products and services in the area of Solar Thermal, Stainless Steel Water Storage Solutions, Sustainable Hot Water Solutions and Complete Water Management Solutions. With the team of technocrats and continuous R&D we have always been one step ahead. We have made our mark with excellent quality control and commitment to our customers and channel partners.

Our record of achieving, surviving, and striving to be the best while meeting the demands of our customers is the key to our reputation today. We're attempting to construct a dream home for our clientele.

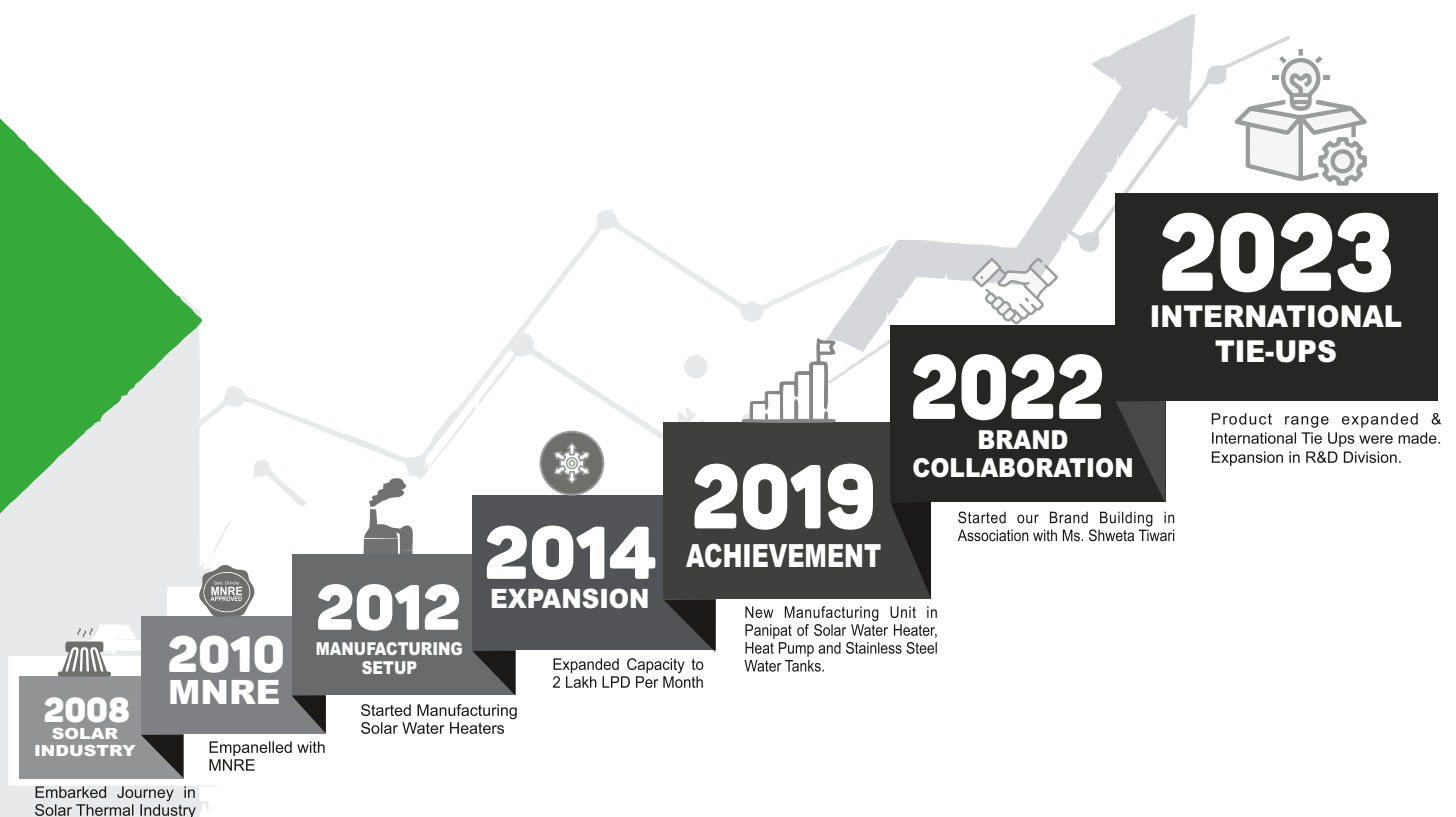
OUR VISION

The vision of our company builds on a long-standing narrative behind our Environment Changing philosophy in line with our Corporate Strapline of change for the Betterment of tomorrow. To be a leader in businesses that helps our fellow Indians enrich their lives and contribute to nations growth through a sustainable value creation.

OUR MISSION

Helping our customers adopt a way of living with minimum energy foot print and maximum Health benefits with the use of renewable energy, energy saving devices and plastic free water storage Products. Passionately strive to enrich our consumer's a quality life.

OUR JOURNEY



WHY CHOOSE SUN STELLAR?

We are working with new energy and endeavours to unlock exceptional values for our customers. We take pride in manufacturing India's most Sustainable product portfolio for every home under one roof. The company has always been technologically advanced, solution focused, driven by strong passion for environmental and social contribution, combined with high creativity and integrity. We believe in maintaining ecological equilibrium and are committed towards manufacturing energy saving products. Sun Stellar is pioneer in bringing the revolutionary services in,

- Renewable Energy Products
- Energy-Saving Devices
- Plastic-Free Water Storage Products
- Sustainable Hot Water Solutions
- Water Management Systems



CERTIFICATIONS

Sun Stellar has received the highest level of certifications in the industry for its products. Each of its products are a result of intensive research and represents cutting-edge technology.



GROUP CLIENTELE





**PRESERVE
YOUR WATER,
SAFE GUARD
YOUR HEALTH**



Maintains
Water
Temperature



STAINLESS STEEL FOR LIFE

For decades, Stainless Steel has been used as a trusted material for almost everything around us.



**PHARMACEUTICAL
INDUSTRY**



**DAIRY AND MILK
PROCESSING**



**CUTLERY AND
KITCHENWARE**



**FOOD PROCESSING
INDUSTRY**



**RAIL AND
METRO**



**DENTAL
REQUIREMENT**



**SURGICAL
TOOLS**



**POWER
GENERATION**

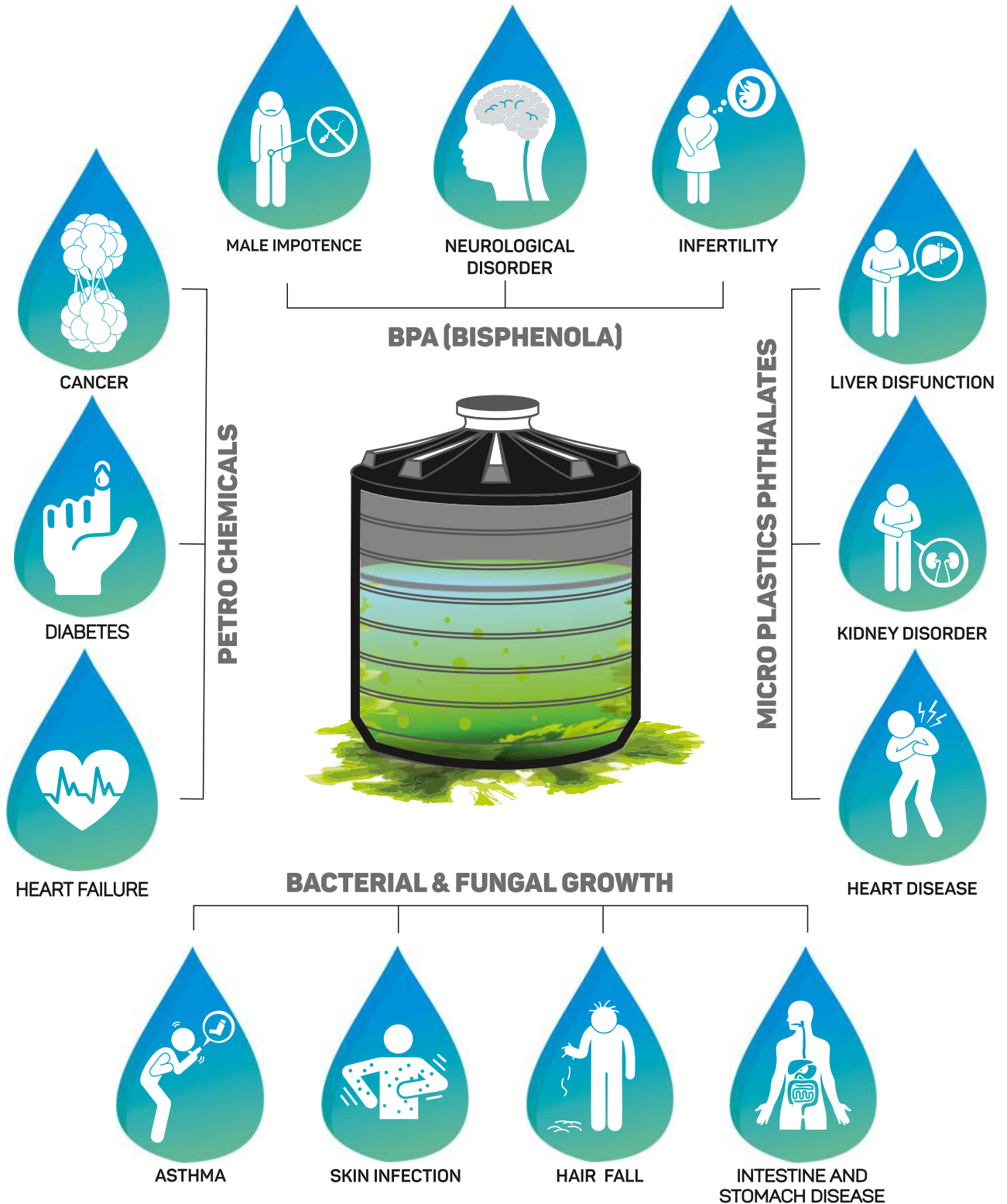


BONE CAP

**STAINLESS STEEL
A CONTEMPORARY SOLUTION FOR WATER STORAGE!!**

PLASTIC TANKS ARE HAZARDOUS

AS PER VARIOUS RESEARCHES CARRIED OUT BY:



ADDING A STELLAR TOUCH FOR A HEALTHY & BETTER

Today & Tomorrow



**Zero Bacterial/
Fungal Growth**



**Maintains
Temperature**



**Long Life
Zero Maintenance**



**No Chemical
Contamination**



**100% Surgical Grade
Stainless Steel**



100% BPA Free



No Foul Smell



**Pure Water
Keeps your body Healthy
& Disease Free**

STELLAR PURE 5 LAYER TECHNOLOGY



Stellar Pure Water Tanks adopts most prudent – 5 Layers technology with each layer serving a distinct function of its own.

The Inner Layer of the tank which is in contact with the water is made of Either Surgical Grade Stainless Steel – 316 or Titanium Stainless Steel SS 316 Ti ensuring that the water remain in its purest form. Three Layers of Insulations are applied on the inner layer comprising of Climate Control Coating , Nitrile Foam Layer and High Density Polyurethane Foam (PUF) ,these 3 Layers are engineered in a such a way that the water temperature inside the tank doesn't get affected by harsh weather conditions be it chilling winters or extreme hot summer months. The fifth layer of the Tank also called the Cladding layer is made of Stainless Steel 304 Grade which protects all the inner layers from any kind of damage

FEATURES



Inner Tank Available with Surgical Steel SS 316 L , Titanium Steel SS 316 Ti And Super Duplex SS 2205 .



Maintains Temperature of Water . (Outside Temperature : 0 to 50 Degrees C)



Design Life of 15-20 Years and Warranty for 10 Years



Dow Chemical – Best Suited PUF insulation for SS Tanks



Automatic Water Level Controller



Thickness of Inner Tank Options - 0.8 MM , 1.0 MM & 1.5 MM

STELLAR ULTRA

7 LAYER TECHNOLOGY



Stellar Ultra is the most contemporary solution for Water Storage. These Water Tanks are engineered with Cutting Edge 7 Layer Technology .Inner Layer of Stellar Ultra Tanks can be selected out of Titanium Steel – SS 316 Ti or Super Duplex SS 2205 or Super Alloy 904 L depending on the Water Quality and Water Source. Five Layers of Insulation are consecrated on the Inner Tank which makes it resistant to the odds of Fire also. Outer Cladding Layer is done with SS 304 which protects all the inner layers from any kind of deterioration.

FEATURES



Inner Tank Available with Surgical Steel SS 316 L , Titanium Steel SS 316 Ti And Super Duplex SS 2205 .



Maintains Temperature of Water . (Outside Temperature : 0 to 50 Degrees C)



Fire Proof Insulation Layer



Dow Chemical – Best Suited PUF insulation for SS Tanks



Automatic Water Level Controller



Thickness of Inner Tank Options - 1.0 MM & 1.5 MM

STELLAR SOLITAIRE CUBICAL STAINLESS STEEL TANK



Sun Stellar Solitaire Tanks are Customized Cubical Stainless Steel Water Tanks with multiple layers of insulation which can be customized into Cubical or Square Shape. These Tanks can be customized in various sizes. In respect to their shape these tanks are considered to be a perfect aesthetic part of an elevation of a modern architecture. These Cubical tanks are approved by all the architects in terms of blending well with the elevations. These tanks come in various finishes and textures to go with the aesthetics, such as black matt, Chrome gloss and matt finish etc.

Also, these Tanks are Safe for storing drinking water as they are made from FDA approved material. These are Weatherproof, waterproof, moisture proof and perfect rooftop solution. These Water Tanks satisfy relevant Food Sanitation Standards.

These Tanks are made with advanced manufacturing Technology with minimal welding and reinforced structure to support the tank's inner layer. These Cubical Shape SS Tanks are made of SS 316 L or SS 2205 Grade Material with thickness of 1.5mm, 2mm or up to 5mm to provide longer life and best of hygiene.



FEATURES



These Tanks are inspired from precious Diamonds, thus giving great aesthetic and merge very well with the Elevation of modern architecture.



The Inner Layer of these tanks are reinforced with Steel Tube Structures on all sides, giving these tanks additional strength to hold large volumes of water with minimum welding.



Easy drainage with the help of sloping centre bottom design and selection of heavy gauge Stainless Steel Inner layers makes these tanks long standing.



These tanks are made with most advanced 7 Layer Technology which gives high insulation against both cold and hot weather conditions.



These tanks are 100 % Customised as per Architects requirement in terms of Height and Sizes as per Space Available on site.



The square and cubical shape of the tanks makes it easier to reduce the height of large volume tanks thus making these tanks Vaastu Compliant.



STELLAR **COCOON** DOUBLE INSULATED TECHNOLOGY



We are Proud to introduce **First Time in India**
STELLAR COCOON.

A Tank Specially Designed for Extremely Cold Regions where it is difficult to maintain the liquid state of Water during day or more often post sunset.

These Tanks are insulated with a Thick Layer of High Density German Bayer PUF insulation from top , sides and Bottom As well.

This Peculiar Design isolates the water inside the Tank from Freezing Temperatures outside thus making sure that the water doesn't freeze even in Sub Zero Climate Conditions.

FEATURES



Water doesn't freeze upto
-20 Degrees Centigrade



No need for any extra
Insulation or separate
covered area



Design life of over 20 Years
and Warranty for 10 Years



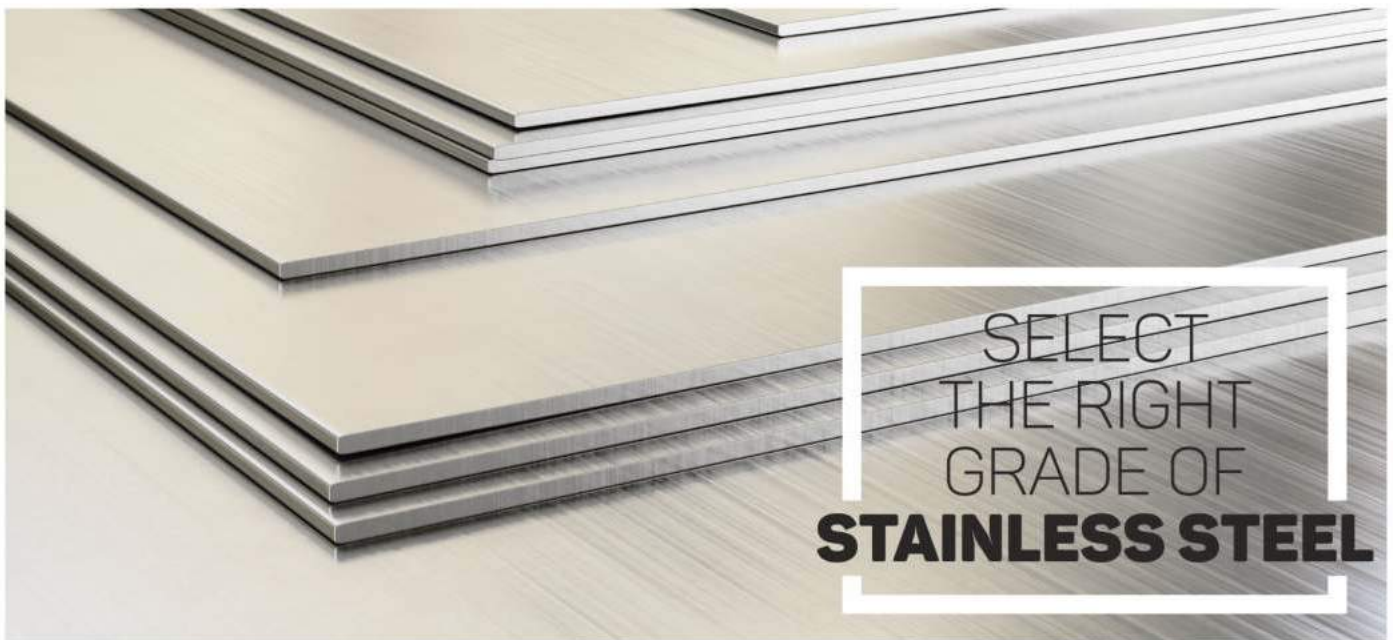
Saves Electricity / Energy for
maintaining water
temperature



Comes with Heavy duty
stand designed to withstand
snow and high speed wind.



SS 304 / 316 Inner Tanks
Option with 0.8 MM and
1.0 MM Thickness



SELECT
THE RIGHT
GRADE OF
STAINLESS STEEL

AUSTENITIC FOOD GRADE STAINLESS STEEL - 304

304 Grade Stainless Steel is the most versatile and widely used stainless steel. The Steel contains both chromium and nickel which makes it a corrosion resistant under mild environment. It is considered resistant to pitting corrosion with water having TDS upto 400mg/L at ambient Temperatures.



Chemical Composition of SS 304

ASTM	EN	%C	%Si	%Mn	%P	%S	%N	%Cr	%Ni
304	EN 1.4301	0.07	1	2	0.045	0.015	0.1	17.5-19.5	8.0-10.5

SURGICAL STAINLESS STEEL - 316

Grade 316 is the standard molybdenum-bearing grade, second in importance to 304 amongst the austenitic stainless steels. The molybdenum gives 316 better overall corrosion resistant properties than Grade 304, particularly higher resistance to pitting and crevice corrosion in chloride environments.



Chemical Composition of SS 316

ASTM	EN	%C	%Si	%Mn	%P	%S	%N	%Cr	%Ni	%Mo
316	EN 1.4404	0.07	1	2	0.045	0.015	0.1	16.5-18.5	10.0-13.5	2.0-3.0

SURGICAL STAINLESS STEEL WITH TITANIUM - 316 Ti

316Ti is a titanium stabilised version of 316 molybdenum-bearing austenitic stainless steel. The 316 Ti alloys are more resistant to inter granular corrosion than the standard 316 Alloys because of the addition of Titanium.



Chemical Composition of SS 316 Ti

ASTM	EN	%C	%Si	%Mn	%P	%S	%N	%Cr	%Ni	%Mo	%Ti
316 Ti	EN 1.4571	0.08	1	2	0.045	0.015	0.1	16.5-18.5	10.0-13.5	2.0-3.0	0.7

SUPER DUPLEX STAINLESS STEEL - 2205

Alloy 2205 is a duplex (Austenitic and Ferritic) Stainless Steel. The high chromium, molybdenum and nitrogen contents results in excellent corrosion resistance properties even in environments containing chlorides and sulphides. It also has good erosion fatigue properties and the yield strength is twice of that of SS 304 / SS 3016 .



Chemical Composition of Super Duplex 2205

ASTM	EN	%C	%Si	%Mn	%P	%S	%N	%Cr	%Ni	%Mo
2205	EN 1.4462	0.03	1	2	0.03	0.035	0.14-0.20	21-23	4.5-6.5	2.5-3.5

SUPER ALLOY STAINLESS STEEL - 904 L

904 L is the most Superior low carbon , high Alloy Stainless Steel . 904L Alloy performs better than all other austenitic stainless steels due to the higher alloying of nickel and molybdenum. 904 L has greater resistance to precipitation of ferrite and sigma phases on cooling and welding than other stainless steels. 904 L is the best available option for Water Storage in areas with extreme hardness or high chemical contents in Ground or Supply Water .



Chemical Composition of Super Alloy Stainless Steel 904 L

ASTM	EN	%C	%Si	%Mn	%P	%S	%N	%Cr	%Ni	%Mo	%Cu
904 L	EN 1.4539	0.02	1	2	0.045	0.035	0.1	19-23	23-28	4.0-5.0	1.0-2.0

TDS (TOTAL DISSOLVED SOLIDS) AND WATER SOURCE

TDS and Water Source plays an important role in the selection of Right Grade of Stainless Steel. Hards Water with High Dissolved Chemicals can cause stress and pitting corrosion in Stainless if the right grade is not selected .

Grade	Water Source	Water Type	TDS (PPM)	Chloride (Cl) (mg/L)	Chlorine (Cl2) (mg/L)	Design Life
SS 304	Ground Water / River Water Supply	Soft	<300	<200	<2	15 Years
SS 316		Hard	<500	<300	<3	15 Years
SS 316 Ti		Hard	<600	<400	<3	15 Years
Duplex 2205	Brackish Water / Polluted Water	Very Hard	<2000	<1000	<5	20 Years
Super Austenitic 904	Brine Water / Sea Water	Extremely Hard	<10000	<5000	<5	20 Years

SPECIFICATIONS

Capacity (LTRS)	Inner Diameter (MM)	Outer Diameter (MM)	Height of Tank (MM)	Inlet Connection	Outlet Connection	Over Flow Connection	Drain Connection
250	700	780	1250	1"	1"	1"	1"
500	700	780	1900	1"	1"	1"	1"
750	970	1070	1620	1"	1.5"	1"	1.5"
1000	970	1070	1900	1"	1.5"	1"	1.5"
1500	1220	1320	1900	1"	1.5"	1"	1.5"
2000	1400	1520	1900	1"	2.0"	1.5"	2.0"
	1300	1420	2150				
2500	1400	1520	2210	1"	2.0"	1.5"	2.0"
3000	1400	1520	2550	1"/1.5"	2.0"	1.5"	2.0"
	1600	1720	2150				
4000	1700	1820	2400	1.5"	2.0"	1.5"	2.0"
	1800	1920	2250				
5000	1800	1920	2500	1.5"	2.0"	1.5"	2.0"
7500	1900	2050	3200	2.0"	2.0"	2.0"	2.0"
10000	1900	2050	4100	2.0"	2.0"	2.0"	2.0"



LARGE MAN HOLE

Easy to clean

Facilitates in easy inspection



LOCKABLE LID

Prevents entry of Insects and animals

Protects from opening itself in bad weather conditions



EXTRA REINFORCED BODY

Ribbed wall provide aesthetic look and strength

Provides additional structural strength

Protects from any pressure exerted by the water

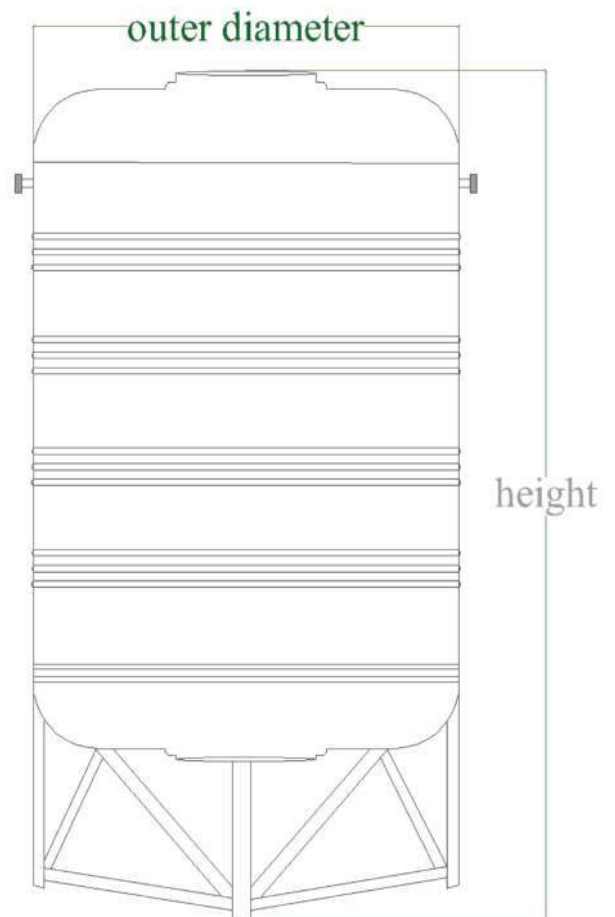


UNIQUE ROUND BASE

Unique round base

It has special drain fitting at the bottom

The dome shape makes a whirlpool while Cleaning the tank





VIETNAM EMBASSY, NEW DELHI



IIT, DELHI



VICE PRESIDENT HOUSE, NEW DELHI



KARNAL



DLF SHOPPING MALL



MANSAROVAR, JAIPUR



ROHINI, NEW DELHI



PANIPAT



TDI CONNAUGHT PANIPAT



CHANDIGARH



LUDHIANA




LUCKNOW





GURGAON


sun Stellar


Rising with the sun...

 SF-28, 30 Cross River Mall, Delhi 110032

 Khasra # 12/21-22, Village Jalalpur 1,
Tehsil Bapoli, Panipat 132104. Haryana

 +91 9143 917 917

 info@mehargroup.in

 www.sunstellar.in

